

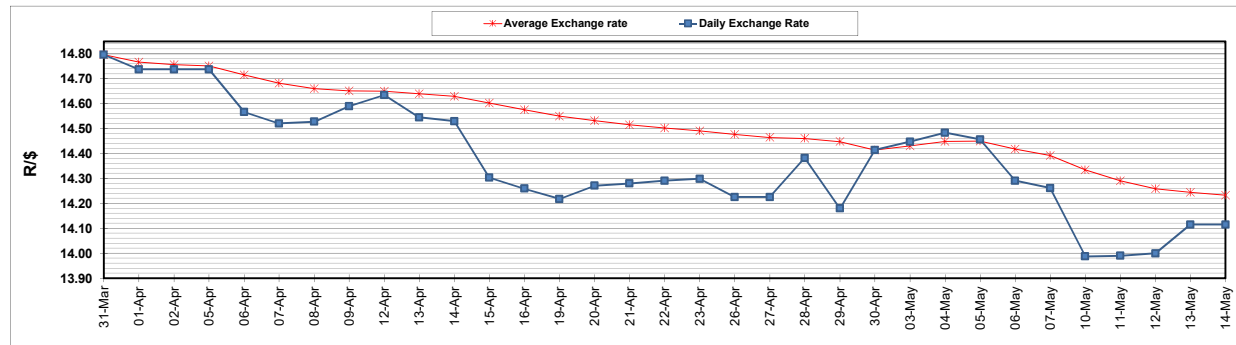
	PETROL 95 ULP	PETROL 93 ULP & LRP	DIESEL 0.05%	DIESEL 0.005%	ILL. PAR.
GAUTENG PUMP PRICE (SA c/l) AS FROM 05/05/2021	1,723.000	1,701.000	-	-	-
WHOLESALE PRICE (SA c/l) AS FROM 05/05/2021	-	-	1,446.620	1,450.020	857.488
SINGLE NATIONAL MAXIMUM RETAIL PRICE	-	-	-	-	1,076.000
BASIC FUEL PRICE - 14/05/2021 (SA c/l)	702.434	691.280	682.051	685.793	665.184
PRESS RELEASE CONTRIBUTION TO BFP 05/05/2021 - 14/05/2021 (SA c/l)	727.170	715.170	659.630	663.030	644.128
UNIT OVER/(UNDER) RECOVERY - 14/05/2021 (SA c/l)	24.736	23.890	(22.421)	(22.763)	(21.056)
AVERAGE BASIC FUEL PRICE 30/04/2021 - 14/05/2021	728.435	717.431	686.936	690.823	675.177
AVERAGE UNIT OVER/(UNDER) RECOVERY 30/04/2021 - 14/05/2021	1.190	0.194	(18.851)	(19.611)	(24.776)

ANALYSIS MOVEMENT OF AVERAGE OVER/(UNDER) RECOVERY

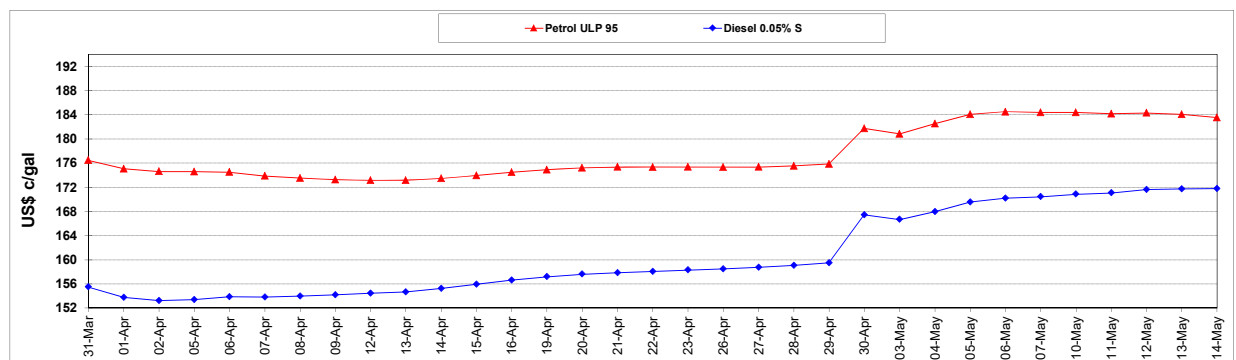
	PETROL 95	PETROL 93	DIESEL 0.05%	DIESEL 0.005%	ILL. PAR.
- MOVEMENT IN INTERNATIONAL PRODUCT PRICES	(9.824)	(10.654)	(29.237)	(30.056)	(34.985)
- MOVEMENT IN EXCHANGE RATE	11.014	10.848	10.386	10.445	10.209
AVERAGE UNIT OVER/(UNDER) RECOVERY 30/04/2021 - 14/05/2021	1.190	0.194	(18.851)	(19.611)	(24.776)

R/\$ EXCHANGE RATE - (R/\$14.1148- 14/05/2021)

EXCHANGE RATE USED IN BASIC FUEL PRICE



INTERNATIONAL PRODUCT PRICES OF BASKET USED IN BASIC FUEL PRICE



BASIC FUEL PRICE IN SA CENTS PER LITRE

